

New TEMS uniform: from Year 10 to Year 12

Physical Education (P.E.) uniform:

The uniform is obligatory for sport and is the same for boys and girls. The P.E. uniform is as listed below:

- Short sleeve round neck T-shirt.
- Joggers.
- Shorts joggers.
- Long sleeve T-shirt.
- Hooded sweatshirt.

Navy or white socks and trainers (no loud colours).



Optional for Year 13

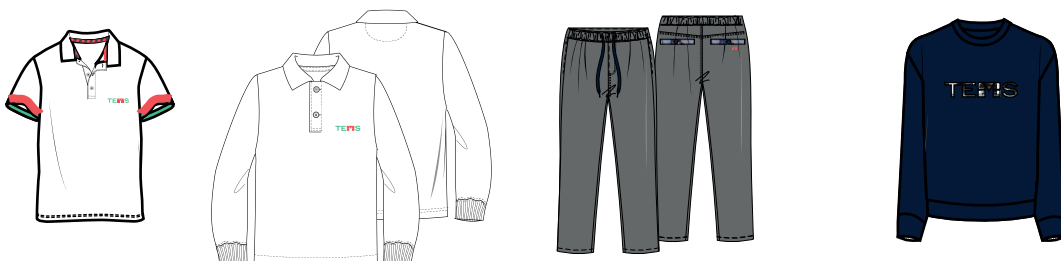
Formal uniform (only Year 10 and Year 11)

Boys and girls:

- Short sleeve polo shirt.
- Pupils may wear the formal trousers of the school uniform or standard dark blue jeans (no torn or flashily accessorized and studded versions).

Black shoes and navy blue socks.

- Crewneck sweatshirt.
- Optional: long sleeve polo shirt.
- Navy socks or tights. Navy or black shoes.



Accessories: Any accessories, e.g. makeup, earrings, belts and bracelets must be discreet. Hairstyles should also be discreet.